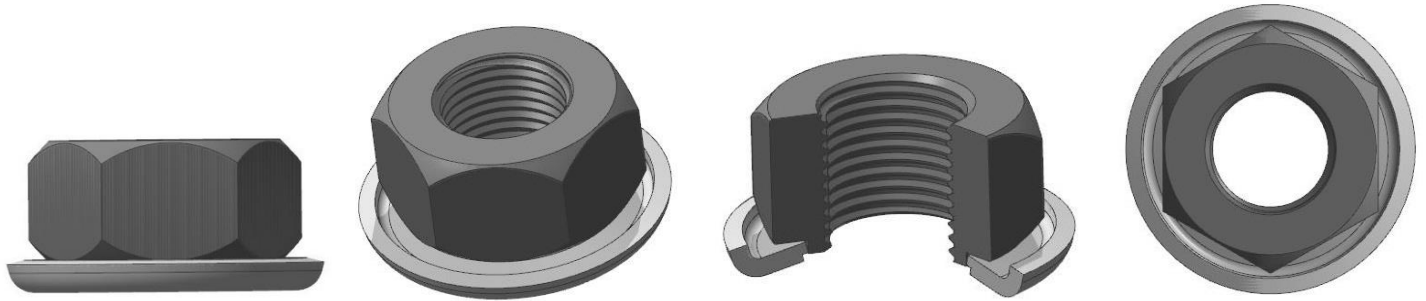


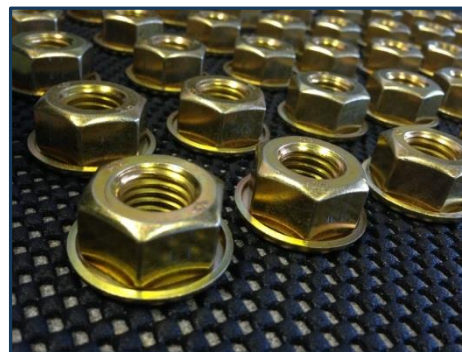
The logo for Innovative Manufacturing Engineering (IME) features the letters 'I', 'M', and 'E' in a stylized font. The 'I' is red, and the 'M' and 'E' are blue. The letters are set against a background of blue and black 3D rectangular blocks.

Innovative Manufacturing Engineering

32711 Glendale Ave. Livonia MI 48150-1611 734-466-8750 imedetroit.com



- A **PRECISE LOAD MATCHED BELLVILLE WASHER WITH FASTENER**
- **HIGHLY ACCURATE JOINT TENSION REGARDLESS OF FASTENER LUBRICITY**
- **THICKNESS & SHAPE ARE DEVELOPED TO PROVIDE PRECISE CLAMP LOAD**
- **TIGHTEN TO FLATTEN THE WASHER AND FOR ASSURED JOINT TENSION**
- **SOFT RADIUS CONTACT EDGE FOR MINIMAL COATING DISRUPTION**
- **EXCELLENT FOR USE ON ALUMINUM TO AVOID GALVANIC CORROSION**
- **SUPERIOR RESISTANCE TO VIBRATION LOOSENING IN SEVERE ENVIRONMENTS**
- **EFFECTIVE RESISTANCE TO EXTREME THERMAL CYCLING EFFECTS**
- **SIMPLIFIED ASSEMBLY CALIBRATED TORQUE WRENCH IS NOT REQUIRED**
- **PROVEN TO REDUCE ASSEMBLY TIME AND ELIMINATE ASSEMBLY ERRORS**



VOSB

ITAR Compliant

Cage Code : 7GQY1